



KNOX
GRAMMAR
SCHOOL

STATE

DA VINCI DECATHLON 2018

CELEBRATING THE ACADEMIC GIFTS OF STUDENTS
IN YEARS 5 & 6



GENERAL KNOWLEDGE

TEAM NUMBER _____

ACTIVITY ONE: LEONARDO DA VINCI

Please select the best answer from the options provided.

10 Marks

1. Which invention is da Vinci *not* known for working on?
 - a. Calculator
 - b. Black box flight recorder
 - c. Helicopter
 - d. Camera
2. What relationship did Andrea del Verrocchio have with Leonardo da Vinci?
 - a. Leonardo was his pupil
 - b. Leonardo was his son
 - c. Leonardo was his cousin
 - d. Verrocchio was the Italian Prime Minister
3. Leonardo is considered a polymath. What is a polymath?
 - a. An Italian inventor
 - b. Someone who was alive during the Renaissance
 - c. A person of wide knowledge or learning
 - d. A specialist mathematician
4. Did Leonardo paint the following picture?



- a. Yes
- b. No

5. Leonardo is known for unexpectedly discovering new phenomena. Which of the following approaches is he not known for using?
- Drawing his observations
 - Comparing similar structures in different organisms
 - Drawing his ideas and annotating these diagrams
 - Travelling to America to speak with University experts

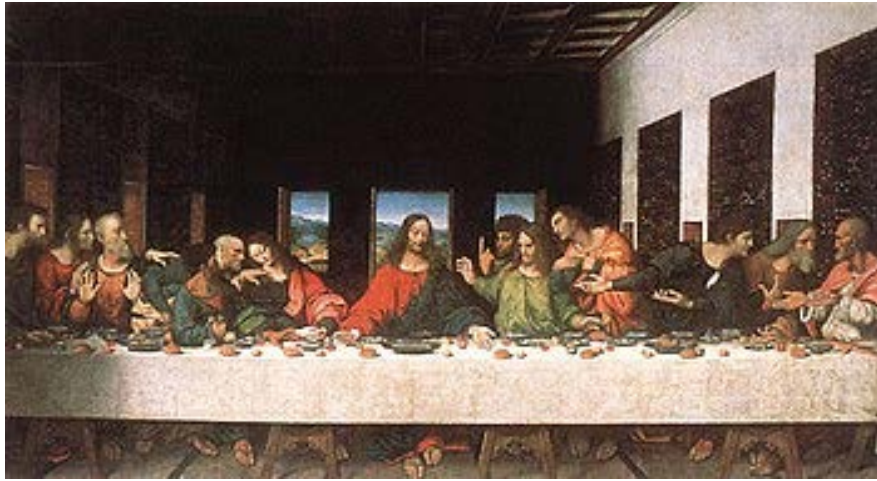
For Questions 6-10, match the word bank options with the images. Circle the corresponding letter on the answer sheet.

Word bank:

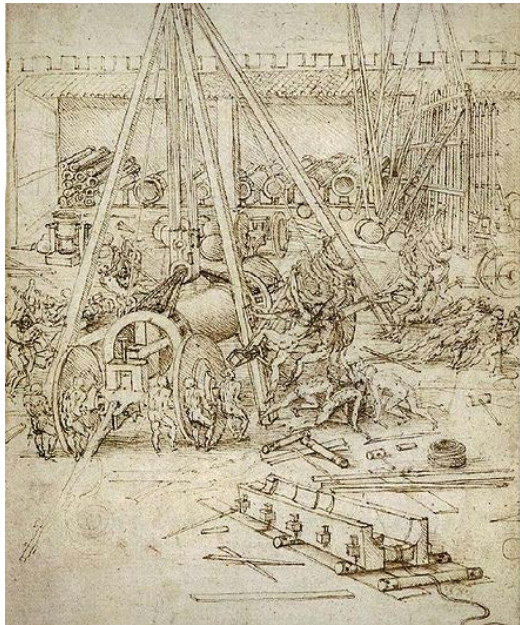
- Milan, Italy
- Flying machine
- Paris, France
- Arsenal
- Michelangelo



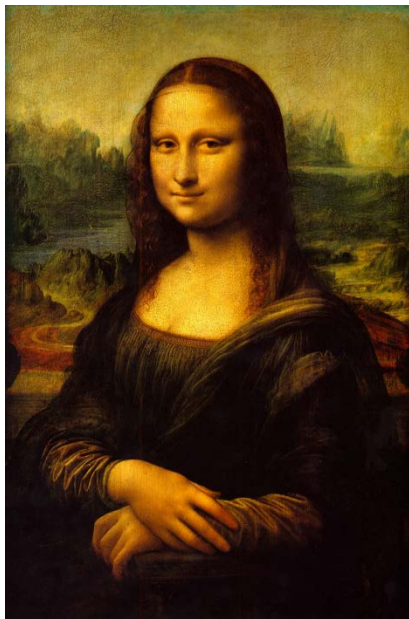
6.



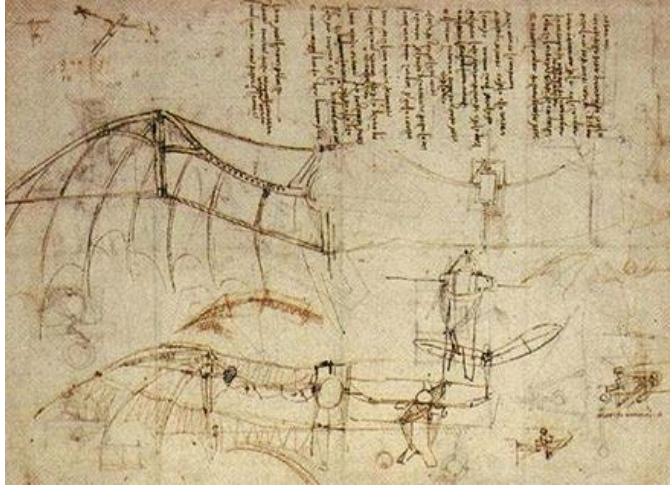
7.



8.



9.



10.

ACTIVITY TWO: THE ARTS

Please select the best answer (A, B, C or D) from the options provided.

10 Marks

MATCH THE FOLLOWING POEMS WITH THEIR POET:

List of poets:

- a. Dorothea Mackellar
 - b. Banjo Paterson
 - c. Rudyard Kipling
 - d. Les Murray
1. The Man from Snowy River
 2. My Country
 3. The Road Not Taken
 4. If

MATCH THE FOLLOWING SONGS WITH THEIR FILM:

List of films:

- a. *The Lion King*
 - b. *The Wizard of Oz*
 - c. *Mary Poppins*
 - d. *Snow White and the Seven Dwarfs*
5. Heigh Ho
 6. Over the Rainbow
 7. Circle of Life
 8. Supercalifragilisticexpialidocious

CHOOSE THE MOST APPROPRIATE ANSWER:

9. What does 'expect the unexpected' mean?
 - a. Anything is possible
 - b. You will only get what you ask for
 - c. People can read your mind
 - d. Expect nothing

10. Brandon Stanton is famous for starting a photoblog series and writing an associated book in 2010. He started in America. This is now a worldwide brand. What is his original series known as?
- a. Humans of the World
 - b. Humans of New York
 - c. Humans of the US
 - d. Humans of Los Angeles

ACTIVITY THREE: SCIENCE & SOCIETY

Please select the best answer from the options provided.

10 Marks

1. Where were the Ancient Olympic Games held?
 - a. Olympia, Greece
 - b. Cairo, Egypt
 - c. Athens, Greece
 - d. London, UK

2. Which of the following cities has not hosted the Summer Olympics, in the modern era?
 - a. Paris, France
 - b. Tokyo, Japan
 - c. Toronto, Canada
 - d. Helsinki, Finland

3. Select a company name to fill the gap:

_____ is a social networking site that allows its users to create webpages to interact with other users. Users of the service are able to create blogs, upload videos and photos, and design profiles to showcase their interests and talents. _____ has provided a place for users to meet new friends and keep in touch with people across the world. The site has grown tremendously since its inception in 2003 and has even launched the careers of some music artists and actors. The site has received backlash from critics who believe that some users use the service to stalk and prey on other users. To combat this issue, _____ has developed privacy settings to allow users to specify who they would like to view their profile and personal information.

(Source: Business Dictionary, 2018)

- a. Twitter
 - b. Facebook
 - c. Myspace
 - d. Google
4. Select the word to fill the gap:

_____ is a cryptocurrency and worldwide payment system. It was the first decentralized digital currency. Its conception is peer-to-peer and transactions take place between users directly, without an intermediary.

- a. The US Dollar
- b. Bitcoin
- c. Litecoin
- d. Euro

5. Select a phrase to fill the gap:

Wilson Greatbatch was an inveterate inventor, with more than 150 patents to his name. He will be best remembered for the invention and development of the first _____, a device which has improved, saved and extended countless lives since its first use in 1960. Worldwide, around three million people currently benefit from Greatbatch's discovery, with an additional 600,000 being implanted every year.

(Source: The Independent, 2011)

- a. X-Ray Machine
 - b. Implantable Pacemaker
 - c. Implantable microchip
 - d. Penicillin
6. There is a lot of talk in the media about a 2-degree limit on global temperature increase. Select the correct statement below which best explains what the 2-degree limit refers to.
- a. In order to prevent catastrophic climatic implications, global temperature increase must be capped at 2 degrees Celsius above pre-industrial levels this century.
 - b. In order to prevent catastrophic climatic implications, global temperature increase must be greater than 2 degrees Celsius above pre-industrial levels this century.
 - c. If we do not have a target for temperature increase, the world will cool this century.
 - d. In order to prevent catastrophic climatic implications, global temperature increase must be capped at 2 degrees Celsius above pre-industrial levels this year.
7. What are the wings of a Boeing 787 plane made of?
- a. Copper only
 - b. Lead only
 - c. Composite material
 - d. Aluminium only
8. Which level of fire rating was introduced throughout Australia after the 2009 Black Saturday Bushfires?
- a. Extreme
 - b. Evacuate
 - c. Emergency
 - d. Catastrophic

9. What is ecology?

- a. the branch of biology that deals with the relations of organisms to one another and to their physical surroundings.
- b. the study of living organisms, divided into many specialised fields that cover their morphology, physiology, anatomy, behaviour, origin, and distribution.
- c. the branch of science concerned with the substances of which matter is composed, the investigation of their properties and reactions, and the use of such reactions to form new substances.
- d. the branch of science concerned with the nature and properties of matter and energy.

10. Which of the following concepts is Charles Darwin most famous for?

- a. The Magna Carta
- b. Scientology
- c. The Theory of Evolution
- d. Gravity

ACTIVITY FOUR: PEOPLE

The following individuals have all unexpectedly in their lifetime received Australia Day honours. Match the name with the face.

10 marks

Part A

List of names:

- a. Adam Goodes
- b. Rosie Batty
- c. David Morrison
- d. Michelle Simmons

1.



2.



3.



4.



Part B

List of names:

- a. Cathy Freeman
- b. Peter Cosgrove
- c. Dick Smith
- d. Ita Buttrose

5.



6.



7.



8.



Part C

9. Which music group is associated with this pedestrian crossing?



- a. Bee Gees
- b. ABBA
- c. The Beatles
- d. ACDC

10. Read the excerpt from a speech below. Who gave this speech?

I say to you today, my friends, though, even though we face the difficulties of today and tomorrow, I still have a dream. It is a dream deeply rooted in the American dream. I have a dream that one day this 11ation will rise up, live out the true meaning of its creed: "We hold these truths to be self-evident, that all men are created equal."

- a. Martin Luther King
- b. Barack Obama
- c. Barnaby Joyce
- d. Fred Hollows

ACTIVITY FIVE: GEOGRAPHY

Please select the best answer from the options provided.

10 Marks

1. What is the most populous city in China?
 - a. Beijing
 - b. Guangzhou
 - c. Hainan
 - d. Shanghai

2. Read the passage below. Select the city where there is not a Disneyland or Disney Resort currently operating.

When Walt Disney opened Disneyland in Anaheim, Calif., on July 17, 1955, he created a unique destination built around storytelling and immersive experiences, ushering in a new era of family entertainment. More than sixty years later, Walt Disney Parks and Resorts (WDPR) has grown into one of the world's leading providers of family travel and leisure experiences, giving millions of guests each year the chance to spend time with their families and friends, making memories that last a lifetime.

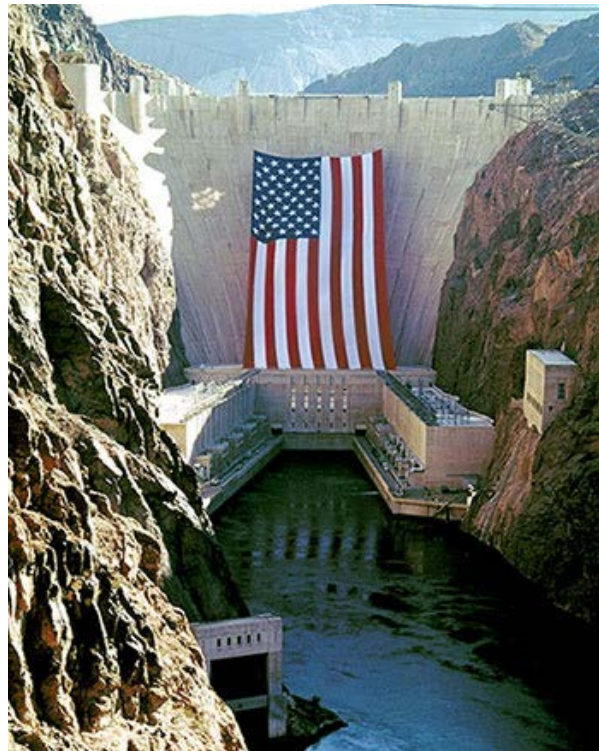
Six world-class vacation destinations with 12 theme parks and 52 resorts are at the heart of WDPR, operating in North America, Europe and Asia with more than 150,000 cast members. WDPR also includes Disney Cruise Line, with four ships and plans for three more to be completed in 2021, 2022 and 2023; Disney Vacation Club, with more than 225,000 member families; Adventures by Disney, which provides guided family vacation experiences to destinations around the globe; Aulani, A Disney Resort & Spa, in Ko Olina, Hawaii; and Walt Disney Imagineering, which designs and creates Disney parks, resorts, cruise ships, attractions and entertainment.

(Source: Disney, 2018)

- a. Paris, France
 - b. Hong Kong, China
 - c. London, England
 - d. Tokyo, Japan

3. What is a contour line?
 - a. A diagrammatic representation of an area of land or sea showing physical features, cities, roads, etc.
 - b. A line on a map joining points of equal height above or below sea level.
 - c. The arrangement of the natural and artificial physical features of an area.
 - d. A small hill or mound.

4. Which dam is this?



- a. Jindabyne Dam
 - b. Three Gorges Dam
 - c. Hoover Dam
 - d. Sand Dams
5. What is the name given to the border between North and South Korea?
- a. The Disputed Lands
 - b. Intra-Korea Border
 - c. Korean Demilitarised Zone
 - d. There is no special name
6. Some products have been developed in unexpected locations, which are often different from the current country they are associated with. Where does sushi originate from?
- a. South East Asia
 - b. California
 - c. Japan
 - d. The Middle East

7. Some products have been developed in unexpected locations, which are often different from the current country they are associated with. Where do samosas originate from?
 - a. India
 - b. Central Asia
 - c. Europe
 - d. North America
8. Some products have been developed in unexpected locations, which are often different from the current country they are associated with. Where does sauerkraut originate from?
 - a. Germany
 - b. Austria
 - c. South America
 - d. China
9. Apple has over 400 stores worldwide, but there is one continent on which there are no official Apple Stores. Which continent is this?
 - a. Asia
 - b. Europe
 - c. South America
 - d. Africa
10. Qantas has recently received its first few Dreamliner aircraft from Boeing. "More than 60,000 suggestions were made, and 45,000 votes cast in selecting the names of the aircraft that will fly nonstop from Perth to London and Melbourne to Los Angeles. Qantas Group CEO Alan Joyce said the public response was fantastic and engaging for both customers and staff." (Qantas, 2017) What was the name of the airline's first Dreamliner?
 - a. Waltzing Matilda
 - b. Skippy
 - c. Quokka
 - d. Great Southern Land

ACTIVITY SIX: PAST, PRESENT & FUTURE

Please select the best answer from the options provided.

10 Marks

1. What was the primary purpose of James Cook's first Pacific voyage?
 - a. To observe indigenous populations from around the world and write a report on lifestyle techniques he thought should be adopted by the British
 - b. To observe the 1769 transit of Venus across the sun and search for the 'unknown southern land'
 - c. To sail to Asia and see what was along the way
 - d. To reach the Pacific in the fastest time possible
2. Which river is Charles Sturt known for his exploration of?
 - a. Amazon River
 - b. Murray River
 - c. The Thames
 - d. Swan River

3. Choose the option which best fills the gaps.

The luxury steamship RMS _____ sank in the early hours of April 15, 1912, off the coast of Newfoundland in the North Atlantic after sideswiping an iceberg during its maiden voyage. Of the 2,240 passengers and crew on board, more than 1,500 lost their lives in the disaster. _____ has inspired countless books, articles and films, and her story has entered the public consciousness as a cautionary tale about the perils of human hubris.

- a. Queen Victoria
 - b. Titanic
 - c. Queen Mary II
 - d. Symphony of the Seas
4. Which consumer electronics and video game company is well known for the creation of the franchises Mario, The Legend of Zelda and Pokémon?
 - a. Disney
 - b. Microsoft
 - c. Sony
 - d. Nintendo

5. Select the odd one out.
 - a. Bitcoin
 - b. Emercoin
 - c. Hong Kong Dollar
 - d. Primecoin
6. What do three of the four options in question 5 have in common?
 - a. They have existed for more than 15 years
 - b. They are all cryptocurrencies
 - c. They are the three most widely used currencies in the world today
 - d. They all have polymer bank notes as their legal tender
7. What brand was the first car in space?
 - a. Volvo
 - b. Toyota
 - c. Tesla
 - d. Honda
8. Whilst population growth is in many ways unexpected, the United Nations has been able to give a rough guide of the figures it expects. By 2030, the world's population is expected to be 8.6 billion and in 2050 it is expected to be 9.8 billion. What is the projected population for 2100?
 - a. 9.9 billion
 - b. 11.2 billion
 - c. 17.8 billion
 - d. 35.4 billion
9. Which recent Australian Prime Minister worked for Goldman Sachs before becoming Prime Minister?
 - a. Malcolm Turnbull
 - b. Tony Abbott
 - c. Julia Gillard
 - d. Kevin Rudd

10. There are Seven Natural Wonders of the world. Three of these wonders are listed below. Select the 'location/event' which is not considered one of the Seven Natural Wonders.
- a. Northern Lights
 - b. Victoria Falls
 - c. Niagara Falls
 - d. Great Barrier Reef